

**soco**more



***Solutions for  
the automotive  
market***

**The Surface Company**

# SOCOMORE has 50 years' experience

*in developing solutions for surface treatment and preparation prior to bonding, assembly and painting. These solutions are designed for the automotive, railway and aviation markets as well as for metal and energy related industries.*

Our products are renowned for their ability to resolve technical challenges on automotive painting and assembly lines throughout the world. They were designed to increase our clients' **productivity**, to **optimise working conditions** or to reduce **environmental impact**.

- Short and long-term protection of parts and vehicles during storage
- Improvement of paint adherence on all surfaces and materials
- Reduction of non-conformities due to poor surface preparation
- Assembly and mounting operations on the lines made easier
- Paint-stripping with NMP-free products, suitable for the removal of multiple layers of paint

More than just a supplier, **SOCOMORE** is a partner who works with their clients to research complete and reliable solutions. Our **R & D**, **technical** and **sales** teams adapt to local needs and help with the introduction of our products in automobile manufacturers' plants and in their **subcontractors'** plants.

## Advantages of pre-saturated wipes

Our wipes are saturated with just the right amount of solvent or water-based solutions to standardise operations and offer economic, environmentally friendly and safe alternatives compared to bulk liquids.

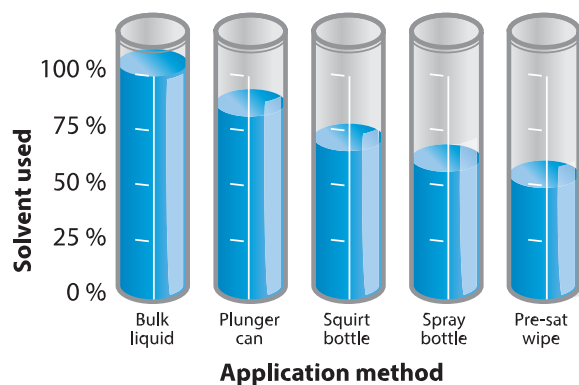
**OUR WIPES ELIMINATE THE USE OF BULK LIQUIDS & STANDARDISE SURFACE PREPARATION OPERATIONS**

- Up to 50 % reduction in solvent use
- Improvement in quality and performance of production lines

- Reduction of VOC emissions
- Reduction of fire risk
- Decrease in waste
- Improvement of working conditions
- Optimisation of issues related to transport and storage of dangerous liquids

**REDUCED OPERATING COSTS**

*Solvents reduced by 50%  
through using pre-impregnated wipes*



# Pre-saturated wipes range

## ● Surface cleaning

### Surface cleaning and degreasing operations.

|   |  |                  |                  |
|---|--|------------------|------------------|
| <b>Removal of excess sealant and surface contaminants such as grease, glue, temporary protections, dust, etc.</b> | Non-woven viscose apertured wipe                         | Smooth surface   | <b>SOCOSAT E</b> |
|   | Smooth pulp wipe/ non-woven polyester                    | Rough surface    | <b>SOCOSAT L</b> |
|   | Smooth microfilament polyester wipe/ non-woven polyamide | Abrasive surface | <b>SOCOSAT G</b> |

SOCOSAT E - 50 g/m<sup>2</sup>



Low  
 Medium  
 High  
 Very high  
 Excellent

Abrasion resistance

Tear resistance

Absorption capacity

SOCOSAT L - 56 g/m<sup>2</sup>



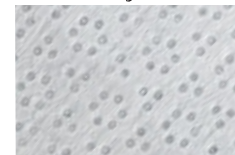
SOCOSAT G - 60 g/m<sup>2</sup>



SOCOSAT M - 110 g/m<sup>2</sup>



PROSAT D - 36 g/m<sup>2</sup>



## ● Surface preparation

### Preparation of surfaces prior to bonding, sealant application or painting operations.

|  |  |                                      |                  |
|--|--|--------------------------------------|------------------|
| <b>Preparation of surfaces before bonding and sealant applications</b> | Non-woven viscose apertured wipe                         | Quick drying structure               | <b>SOCOSAT E</b> |
| <b>Surface preparation prior to painting</b>                           | Smooth microfilament polyester wipe/ non-woven polyamide | Low lint                             | <b>SOCOSAT G</b> |
|  | Non-woven embossed polypropylene wipe                    | Extremely low lint on smooth surface | <b>PROSAT D</b>  |
|  | Smooth knitted polyester wipe                            | Lint free                            | <b>SOCOSAT M</b> |

## ● Final cleaning

### Optimal finish.

|  |                                       |                                      |                 |
|--|---------------------------------------|--------------------------------------|-----------------|
| <b>Reduction of static and redeposition of particles</b> | Non-woven embossed polypropylene wipe | Extremely low lint on smooth surface | <b>PROSAT D</b> |
|--|---------------------------------------|--------------------------------------|-----------------|

For more information please see the product technical data sheet.  
 To see our complete range of pre-saturated wipes, go to [www.socomore.com](http://www.socomore.com).

# Pre-saturation solutions

## ● Surface preparation

**Cleaning/degreasing of surfaces prior to bonding, sealant application or painting operations.**

| Application   | Cleaner              | Volatility      | Production control/maintenance | Product                |
|---|----------------------|-----------------|--------------------------------|------------------------|
| <b>Surface preparation prior to bonding, paint, sealant application</b> | 100 % VOC solvent    | ****            | -                              | <b>SOCOSOLV FD+</b>    |
|   |                      | ***             | Yes - UV tracer                | <b>SOCOSOLV FD UV</b>  |
|   | 50 % VOC solvent     | **              | -                              | <b>DIESTONE MP 50</b>  |
|   |                      | **              | -                              | <b>SOCOCLEAN A2501</b> |
| 30 % VOC solvent  | **                   | Yes - UV tracer | <b>SOCOCLEAN A2501 UV</b>      |                        |
|   | **                   | -               |                                |                        |
| <b>Pre-paint cleaning of plastic and composite parts</b>                | VOC-free water-based | *               | -                              | <b>SOCOCLEAN V2477</b> |

Volatility : \*\*\*\* very high \*\*\* high \*\* good \* average

All of our pre-saturated wipes can be supplied with raw materials such as isopropyl alcohol (70/30, 85/15 & 100 %), ethanol, heptane, etc.

## ● Surface cleaning

**Surface cleaning and degreasing operations.**

| Application   | Cleaner              | Flash point    | Product                   |
|---|----------------------|----------------|---------------------------|
| <b>General cleaning and degreasing</b>                                | VOC-free solvent     | 99 °C (210°F)  | <b>DIESTONE ZERO HD</b>   |
|   | VOC-free water-based | N/A            | <b>SOCOCLEAN ZERO AP</b>  |
|   | 100 % VOC solvent    | 30 °C (86 °F)  | <b>DIESTONE DLS</b>       |
| <b>Removal of excess fresh/uncured sealant, glues, adhesive tapes</b> | 50 % VOC solvent     | 52 °C (126 °F) | <b>DIESTONE MP50</b>      |
|   | VOC-free water-based | N/A            | <b>SOCOCLEAN ZERO APC</b> |

## ● Inter-operation cleaning

| Application  | Cleaner                 | Instructions for use | Product               |
|--|-------------------------|----------------------|-----------------------|
| <b>Removal of heavy contaminants such as waxy and oily protective coatings, grease and oil</b> | VOC-free liquid solvent | Application in bath  | <b>HYSO 93</b>        |
|  | VOC-free gel solvent    | Water rinseable      | <b>SOCOSOLV A3582</b> |



## ● Customer stories

### INITIAL SITUATION:

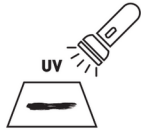
SOCOMORE's expertise was requested by a company specializing in electric car assembly, in order to find a solution for reducing the number of non-conformances in their surface preparation cleaning process before critical bonding.



### OUR SOLUTION:

#### → SOCOSOLV FD UV

The SOCOSOLV FD UV, a new Fast Dry solvent-based cleaning solution with UV tracer which allows the quality team to visualize the areas where the product has been applied under a UV lamp.



### MAIN BENEFITS:

- Allows direct verification on the line or several months after application.
- Two in one product that doesn't lengthen the surface preparation process.
- Fast drying and maintains the adhesion properties of the surface.

### INITIAL SITUATION:

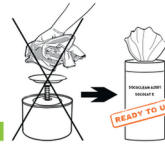
Our customer, a European car manufacturer, wanted to standardize operations, reduce cycle time and at the same time improve working conditions on the assembly line.



### OUR SOLUTION:

#### → SOCOCLEAN A2501

To provide an alternative to the 100% VOC solvent, self-impregnated cotton rag with plunger cans, SOCOMORE designed a ready-to-use roll of 65, 15x28 wipes used with a self-closing plastic canister. Thanks to SOCOCLEAN A2501's cleaning properties and the Socosat E's premium apertured cloth, our solution offers a real benefit in terms of health, safety and improved working conditions.



### MAIN BENEFITS:

- Drastically reduces the quantity of solvent & VOC site emissions.
- No risk of accidental spillage of flammable liquids.
- Standardized, consistent performance results in reduced reworking operations.

### INITIAL SITUATION:

Our customer, a major European car manufacturer had to stop using heptane for pre-bond cleaning in order to respect exposure limit constraints without impacting quality and cycle time: must be done right the 1st time and every time.



### OUR SOLUTION:

#### → SOCOSOLV FD+

The SOCOSOLV FD+, a thin & high 'release capacity' textile, saturated with a high evaporation rate solvent-based solution, ensuring the right volume of solvent applied on the surface which guarantees a perfectly clean surface in a short time.



### MAIN BENEFITS:

- Safer EH&S solution.
- No impact on process and subsequent steps.
- Ready-to-use surface preparation product

## ● Packaging

Various packaging options are available to facilitate ease of use and on-site storage.

- Refillable canisters and buckets which can be re-used, reducing waste and environmental impact.
- Flat packs of pre-cut wipes to reduce the amount of fibers on the surface from cutting. Small format flat packs, suitable for automatic dispensers which improve stock control and reduce usage.
- Single use buckets avoid the logistics of returning packaging.

**We provide a complete product - the right solution, on the right cloth, in the right format - in a practical container.**



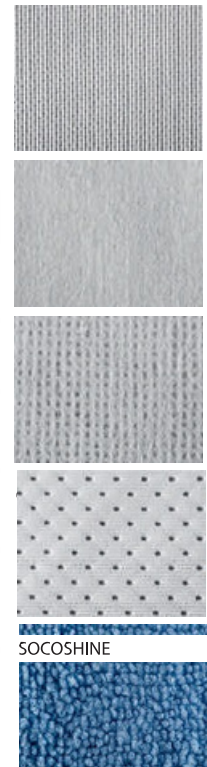
# Ranges for the preparation and protection of parts, assembly and repairs

## Dry wipes

Complementary range of dry wipes for surface wiping, cleaning, preparation and polishing.

| Application             | Cloth type                                   | Weight               | Structure       | Product                      |
|-------------------------|--|----------------------|-----------------|------------------------------|
| Wipe off                | Knitted polyester                            | 130 g/m <sup>2</sup> | Smooth          | <b>POLYWIPES</b>             |
|                         | Pulp/non-woven polyester                     | 70 g/m <sup>2</sup>  | Crepe           | <b>SONTARA EC</b>            |
| Excess sealant removal  | Viscose/non-woven polyester                  | 56 g/m <sup>2</sup>  | Apertured       | <b>SOCOWIPES VP50</b>        |
| Cleaning painting tools | Knitted polyester                            | 240 g/m <sup>2</sup> | Embossed        | <b>QUILTEC<sup>(1)</sup></b> |
| Polishing and finishing | Polyester microfibre/stitched edge polyamide | 325 g/m <sup>2</sup> | Microfibre loop | <b>SOCOSHINE</b>             |

(1) Product manufactured by SOCOMORE as part of our collaboration with Contec.



## Water-based lubricants

For the protection of parts during assembly, forming and drawing operations.

|   |   |          |                                 |
|---|---|----------|---------------------------------|
| Facilitates the mounting/dismounting of tyres | Liquid lubricant/Aerosol                          | Spraying | <b>SOCOLUB V0690 (MICHELIN)</b> |
|   | Gel lubricant                                     |          | <b>SOCOLUB V0692</b>            |
| Lubrication of metal/rubber interfaces        | Lubricant used as a slipping agent for elastomers | Brushing | <b>SOCOPROTEC V0683 (PSA)</b>   |

## Surface cleaning

For cleaning automobile bodies and parts.

|                            |  |                        |
|----------------------------|--|------------------------|
| Water rinseable cleaner    | Immersion or high-pressure cleaner         | <b>SYNCLAIR A/C</b>    |
| Cleaner/Descaler           | Spray washing machine or immersion cleaner | <b>SOCOCLEAN T3430</b> |
| Dry cleaning and polishing | VOC and solvent free. No rinse.            | <b>SOCOCLEAN SHINE</b> |

## ● *Paint stripping*

**Liquid and gel paint strippers.** Free from phenol, chlorine, NMP, hexavalent chrome.  
For removing all types of paint including acrylic, epoxy, polyurethane and urethane alkyd paint systems.

|                              |                                     |  |                                 |                        |
|------------------------------|-------------------------------------|--|---------------------------------|------------------------|
| <b>Liquid paint stripper</b> | High performance alkaline activated | Suitable for all metal alloys  | Bath T°: 80-115 °C (176-239 °F) | <b>KEMSTRIP 600</b>    |
|                              | High performance acid activated     | Suitable for all alloys, except high strength steel                              | Bath T° : ambient               | <b>SOCOSTRIP A4512</b> |
| <b>Gel paint stripper</b>    | High performance acid activated     | Suitable for all alloys, except magnesium, cadmium-plated or high strength steel |                                 | <b>SOCOSTRIP A0212</b> |

## ● *Paint adhesion promoters*

### **Sol-gels.**

Chrome-free solution for metal and composite surfaces to reinforce paint adhesion.

|                 |  |                           |
|-----------------|--|---------------------------|
| <b>Coloured</b> | On aluminum, titanium, stainless steels and painted surfaces | <b>SOCOGEL B0202 BLUE</b> |
|-----------------|--|---------------------------|

## ● *Surface protection*

**Temporary protection coatings (TPC).** Washable and peelable coating for protecting surfaces from scratches and corrosion during storage or transport.

|  |  |                               |                      |
|--|--|-------------------------------|----------------------|
| <b>Metallic and composite surfaces</b> | Washable with water-based/solvent cleaners | Anti-UV protection<br>Low VOC | <b>PROPACO SP3</b>   |
| <b>Metallic surfaces</b>               | Peelable                                   | -                             | <b>PELLICAL 119C</b> |

### **Corrosion inhibiting compounds (CIC)\*.**

Waterproof and anti-corrosion protection for materials, spare parts and assemblies. For application on metallic surfaces, painted or unpainted composites, as a physical, chemical and environmental protection.

|   |  |                      |                    |
|---|--|----------------------|--------------------|
| <b>Medium-term temporary protection</b> |  | Oily waterproof film | <b>WADIS 24/60</b> |
| <b>Long-term temporary protection</b>   |  | Waxy waterproof film | <b>SOCOPAC 65H</b> |

## ● *Aluminium surface treatment*

**Complete range of REACH compliant products,** designed for aluminium surface treatment lines, and associated with the anodization and chemical conversion processes.

|  |   |                                       |
|--|---|---------------------------------------|
| <b>Degreasing</b>                                    | <ul style="list-style-type: none"> <li>• Borate and silicate free</li> <li>• Efficiently removes contaminants, such as cutting, forming and drilling lubricants,</li> <li>• Optimisation of bath life (+30%)</li> <li>• Suitable for spraying thanks to its anti-foam additive</li> </ul> | <b>SOCOCLEAN A3432</b>                |
| <b>Deoxidation/Desmutting</b>                        | <ul style="list-style-type: none"> <li>• Chrome and fluoride free</li> <li>• Suitable for sheet and cast metal and profiles.</li> <li>• Stable attack rate, including during bath ageing</li> </ul>   | <b>SOCOSURF A1858/A1806</b>           |
| <b>Cr(III) conversion, sealing after anodization</b> | <ul style="list-style-type: none"> <li>• Suitable for all aluminium alloys</li> <li>• For use in a bath, or in two baths to obtain superior anti-corrosion and paint adherence results on copper-rich combinations.</li> </ul>  | <b>SOCOSURF TCS<br/>SOCOSURF PACS</b> |

\*Certain products are not available in all areas. Please contact your local representative.  
Please see the product's technical data sheet for approvals and characteristics.  
To see our complete range, please go to [www.socomore.com](http://www.socomore.com)

# Complementary ranges

**socomore** The Surface Company

Complete solutions, from surface cleaning to pre-treatment **before assembly, painting & bonding** on metallics, composites or plastics.



Functionalized coatings for **use on exterior leading edges, rotary parts & equipments.**



A wide range of non-destructive testing (NDT) products, materials and services **for penetrant & magnetic testing.**



Epoxy-filled resin compounds & Sealants for **metal & composite assemblies in land, air and sea applications.**



Highly certified and respectful cleaning and disinfection products **for hands and surfaces.** Alcoholic or plant based solutions **for industrial and everyday use.**

## Companies we work with

BMW GROUP • FAURECIA • FORD GROUP • GENERAL MOTORS • GROUPE RENAULT • NISSAN • HYUNDAI • JTEKT • KIA MOTORS • MECACHROME • PLASTIC OMNIUM • RENAULT TRUCKS • STELLANTIS • TOYOTA • TRELLEBORG • VALEO • VOLVO • VOLVO TRUCKS • ZANINI

### ASIA PACIFIC REGION

Email: asia@socomore.com  
Phone: +81 45 620 3567

### CHINA

Email: china@socomore.com  
Phone: +86 21 58131133 190

### IRELAND AND UK

Email: ireland@socomore.com  
Phone: +353 214 889922

### UNITED STATES - MEXICO

Email: north-america@socomore.com  
Phone +1 817-335-1826  
Buy online: store.socomore.com

### CANADA

Email: csr-ca@socomore.com  
Phone +1 604-420-7707  
Buy online: store-ca.socomore.com

### SOUTH AMERICA

Email: south-america@socomore.com  
Phone +55 (11) 96660-7169

### ALL OTHER COUNTRIES

Email: europe@socomore.com  
Phone: +33 (0)2 97 63 05 01

*Supporting our clients throughout the world is a priority for us.*

*We have sales and technical teams, subsidiaries and strategic partners throughout the entire world to meet our clients' needs.*

Distributed by:

**IPS**™ | Innovative products and services

IPS-Group A/S  
Hejreskovvej 22A  
DK-3490 Kvistgård  
Denmark

Phone: +45 4913 2800  
AOG Tel: +45 2710 4262  
Email: info@ips-group.dk  
Web: www.ips-group.dk

[www.socomore.com](http://www.socomore.com)

**socomore**